



Catalogue
2023

**Orchidaceae
specialties**



Floricultura
ORCHIDACEAE & ARACEAE



Orchids are our passion

Breeding your success is what we stand for. We have specialised in the propagation of orchids and tropical plants since 1933. A desire for perfection and the aim to develop strong, profitable and distinctive varieties for our customers are the driving forces behind Floricultura and its staff.

At our locations in the Netherlands, India, Brazil, Poland, China and the United States we produce a wide range of orchids and anthuriums for every grower, every climate zone, and for every kind of consumer. Our Phalaenopsis young plants are guaranteed peat free and most of them are sorted by the newest generation of robots before they are being shipped to you. Plant uniformity you can rely on.

Only the novelties that meet the most stringent quality requirements are introduced into the market. We have once set the industry standard to minimum 70 days of vase life (flowering time). Now we are setting the bar even higher; 51 Phalaenopsis varieties already have a vase life of 90 days or more.

Our success is founded on our extensive research, unique genetics and over 90 years of expertise. At our research and breeding locations in the Netherlands, we ensure both breadth and depth in our range of orchids. Our goal is to guarantee you good yields!

I am proud to present you this new catalogue where you can find our current Phalaenopsis assortment, including a wide range of new varieties. Be amazed!

Ronald van Geest
CEO

Table of contents

Cymbidium

Page 4

Miltoniopsis

Page 22

Odontoglossum

Page 26

Dendrobium Nobile

Page 30



Cymbidium



Pastoral Lady
8238

Flowering period:
December, January



INTERMEDIATE



Dawn Flor
8231

Flowering period:
December, January



STANDARD



Angel White

8313

INTERMEDIATE

Flowering period:
December, January



Katy Flor

8429

STANDARD

Flowering period:
February, March



Royal Promise 'Maxime'

8442

STANDARD

Flowering period:
October, November, December



Iceflor

8466

INTERMEDIATE

Flowering period:
December, January, February



Earliflor

8469

INTERMEDIATE

Flowering period:
November, December, January



Season Flor

8492

INTERMEDIATE

Flowering period:
December, January

Cymbidium



Angel Sue

8539

INTERMEDIATE

Flowering period:
October, November, December



White Flame

8624

INTERMEDIATE

Flowering period:
December, January, February



Deepee Seventeen

8625

INTERMEDIATE

Flowering period:
October, November, December



Summer Frost

8638

INTERMEDIATE

Flowering period:
September, October, November



Chiara

8649

INTERMEDIATE

Flowering period:
November, December, January



Pink Foam

8663

INTERMEDIATE

Flowering period:
November, December



Snow Dust

8667

INTERMEDIATE

Flowering period:
November, December, January



White Madam

8686

INTERMEDIATE

Flowering period:
November, December, January



Earliara

8741

STANDARD

Flowering period:
October, November



Cymbidium



Allison Shaw

7958

Flowering period:
November, December, January



MINI



Early Kiwi 'Skyscraper'

931

Flowering period:
November, December



STANDARD



Pink Beauty 'Joal'

8008

Flowering period:
April



STANDARD



Summer Pearl 'Shirley'

8025

Flowering period:
September, October, November



INTERMEDIATE



Sonia

8028

Flowering period:
September, October, November



INTERMEDIATE



Selma

8056

Flowering period:
September, October, November



INTERMEDIATE



Petite Surprise

8094

INTERMEDIATE

Flowering period:
October, November, December



Marilyn Monroe

8142

STANDARD

Flowering period:
December, January



Pretty Flor

8157

INTERMEDIATE

Flowering period:
October, November, December



Summer Love 'Dwarf Pink'

8171

INTERMEDIATE

Flowering period:
October, November, December



Shellpearl 'Parnasse'

8216

INTERMEDIATE

Flowering period:
February, March



Lucky Rainbow 'Lupine Joyner'

8311

INTERMEDIATE

Flowering period:
December, January

Cymbidium



Ballerina

8366

INTERMEDIATE

Flowering period:
January, February, March



Bedrock

8377

STANDARD

Flowering period:
October, November, December

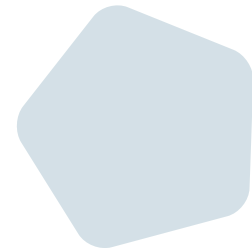
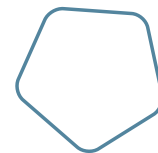


Pearl Flor

8420

INTERMEDIATE

Flowering period:
September, October, November



Sweet Flor

8425

STANDARD

Flowering period:
February, March



Geyser Flor

8470

STANDARD

Flowering period:
March, April



Flying Sue

8483

Flowering period:
December, January



INTERMEDIATE



Li Flor

8493

Flowering period:
October, November, December



INTERMEDIATE



Flame Sox

8594

Flowering period:
December, January



INTERMEDIATE



Abbigail

8652

Flowering period:
November, December, January



INTERMEDIATE



Fashion Show

8657

Flowering period:
February, March, April



INTERMEDIATE



White Surprise

8665

Flowering period:
December, January



INTERMEDIATE

Cymbidium



Jolly Red

8666



INTERMEDIATE

Flowering period:
October, November, December



Mamma Mia

8676



INTERMEDIATE

Flowering period:
December, January



Leontine

8679



INTERMEDIATE

Flowering period:
December, January



Pink Lady

8681



INTERMEDIATE

Flowering period:
November, December, January



Jolly Red

8666



INTERMEDIATE

Flowering period:
October, November, December



Mamma Mia

8676



INTERMEDIATE

Flowering period:
December, January



Leontine

8679

INTERMEDIATE

Flowering period:
December, January



Pink Lady

8681

INTERMEDIATE

Flowering period:
November, December, January



Dresscode

8696

INTERMEDIATE

Flowering period:
February, March, April



Pink Fall

8697

INTERMEDIATE

Flowering period:
November, December



Sylvan Flor

18152

STANDARD

Flowering period:
December, January



Naomi

8653

INTERMEDIATE

Flowering period:
December, January



Cymbidium



Peggy Sue 'Five'

8127

INTERMEDIATE

Flowering period:
September, October, November



Red Radiance

8141

INTERMEDIATE

Flowering period:
March, April



High Sue

8490

INTERMEDIATE

Flowering period:
December, January



Jamie Red

8498

INTERMEDIATE

Flowering period:
December, January



Late Sue

8500

INTERMEDIATE

Flowering period:
October, November, December



Latoya

8503

INTERMEDIATE

Flowering period:
November, December, January





Georgina

8506

INTERMEDIATE

Flowering period:
December, January

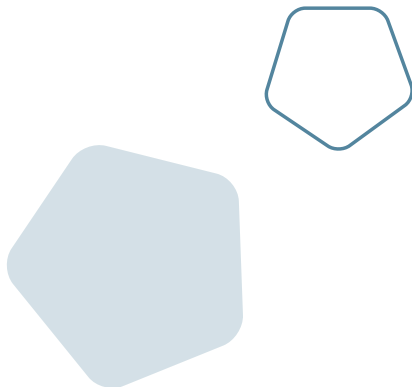


Red Arrow

8633

INTERMEDIATE

Flowering period:
February, March



Wonderland

8687

INTERMEDIATE

Flowering period:
December, January



Orange Shining

8710

INTERMEDIATE

Flowering period:
October, November, December



Muffetflor

18255

STANDARD

Flowering period:
December, January

Cymbidium



Tracey Reddaway 'Sungold'

8079

STANDARD

Flowering period:
October, November, December, January, February



Valya Flor

8242

STANDARD

Flowering period:
March, April



Golden Courtier 'Wall Flor'

8261

STANDARD

Flowering period:
March, April



Shiny Yellow

8391

INTERMEDIATE

Flowering period:
September, October, November



Dream Bisque 'Golden Wish'

8397

STANDARD

Flowering period:
January, February, March



Pre Flor

8421

INTERMEDIATE

Flowering period:
December, January



Valley Flor

8423

STANDARD

Flowering period:
February, March



Dolly Flor

8431

INTERMEDIATE

Flowering period:
November, December, January



Ransom Flor

8451

INTERMEDIATE

Flowering period:
November, December, January



Camo Flor

8467

INTERMEDIATE

Flowering period:
February, March



Lovely Sue

8507

INTERMEDIATE

Flowering period:
October, November, December



Carisque

8703

INTERMEDIATE

Flowering period:
November, December, January





Earlisue 'Paddy'

18145

INTERMEDIATE

Flowering period:
October, November, December, January



Baltic Honey 'Bonnie'

8041

STANDARD

Flowering period:
September, October, November



Green Rock

8509

INTERMEDIATE

Flowering period:
December, January, February



Suzy

8024

INTERMEDIATE

Flowering period:
September, October, November



Megan

8626

INTERMEDIATE

Flowering period:
December, January, February



Senne

8054

INTERMEDIATE

Flowering period:
September, October, November



Greenshot

8644

INTERMEDIATE

Flowering period:
January, February



Green Flame

8596

INTERMEDIATE

Flowering period:
October, November, December



Jade

8655

INTERMEDIATE

Flowering period:
January, February

Cymbidium



Marcy Flor

8281

STANDARD

Flowering period:
January, February

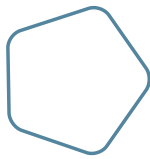
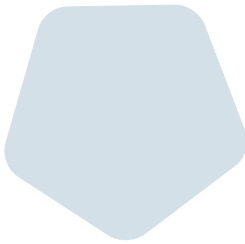


Kiwi Flor

8384

STANDARD

Flowering period:
October, November, December



Los Angeles

8548

STANDARD

Flowering period:
January, February



Hazel Flor

8567

INTERMEDIATE

Flowering period:
October, November



Let Flor

8497

INTERMEDIATE

Flowering period:
December, January





Olive

8629



INTERMEDIATE

Flowering period:
December, January, February



Citadelle

8675



INTERMEDIATE

Flowering period:
December, January

Miltoniopsis



Luna Bianca

6313



Herralexandre 14189

14189





Herralexandre 14193

14193



17521



17527



70038



17488



17528





Ananda Apple 'Fioratta'

6317



Hajime Ono 'Maui Falls'

6732



Newton Falls

6902



Red Tide 15159

15159



Red Tide 15160

15160



17503





17513



17522



73004



Breathless 'Brilliant'

6027



Princess Diana 'Red Baron'

6721



17524





Odontoglossom





Burr. 'Nelly Isler'

87



Odcdm. Catatante 'Pacific Sunburst'

297



Wils. Warm Memories 'Wild Fire'

6434



Bnfd. Gilded Tower 'Mystic Maze'

6464



Ons. Rontante 'Sunrise'

64133



Burr. Fran's Jewels '64'

64164



Odontoglossum



Alcra. Mem. Donald Yamada

64167



Wils. Soul Fire

64171



Burr. Mayor Billy

64185



Oda. Stirbic 'Favorite'

65116



Wils. Tiger Tail

65316



Mltdm. 'Honeybee'

70065





70066



Colm. Pacific Sunset

70067



Colm. Pacific Twilight

70068



Wils. Blazing Lustre 'Night Ruby'

70077



70079



70080



Dendrobium nobile



Spring Dream 'Apollon'

5203



Spring Dream 'Kumiko'

5204





Fairlight

70165



Comet King 'Akatsuki'

5206



Stardust 'Firebird'

5101



Stardust 'Chyomi'

5100



Bright Eyes

70030



Sunny Eyes

70050





Floricultura

ORCHIDACEAE & ARACEAE

Floricultura B.V.

Cieweg 13

1969 MS Heemskerk

The Netherlands

Phone +31 251 20 30 60

www.floricultura.com

The specifications with regard to varieties are determined on the basis of multiple measurements conducted at Floricultura and a number of test locations. Spike length and percentages depend strongly on cultivation method used and local conditions.

All figures listed in this catalogue were carefully compiled by Floricultura. Please bear in mind that these are only indicative. No rights can be derived from them. Spike percentages based on insufficient data are not being published on this website. If you have any questions or require clarification about anything please contact one of our account managers.

© 2023 Floricultura B.V.

ENG_JUNE_2023